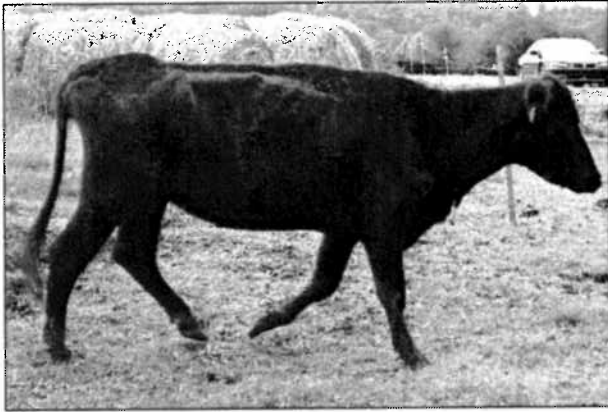


BCS 1 = Emaciated

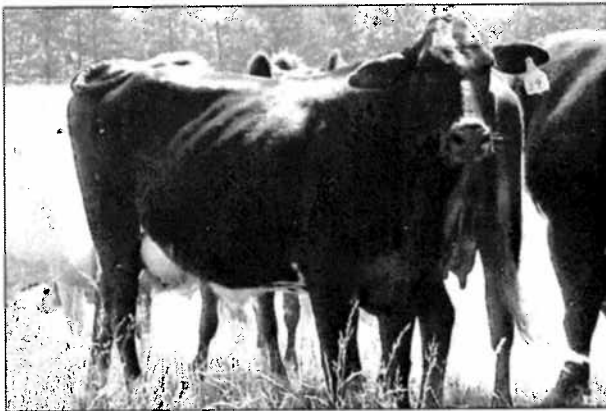
No palpable fat is detectable over the spinous processes, transverse processes, ribs, or hooks. The tailhead and ribs appear very prominent.

**BCS 2 = Poor**

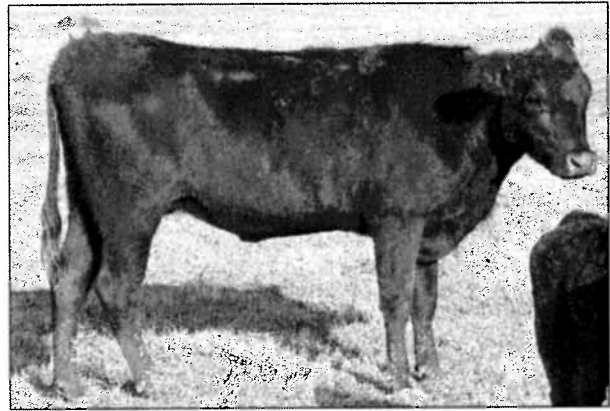
Animal is still somewhat emaciated but the tailhead and ribs are less prominent. Individual spinous processes are still sharp to the touch. Some tissue cover is present over the ribs toward the top of the back.

**BCS 3 = Thin**

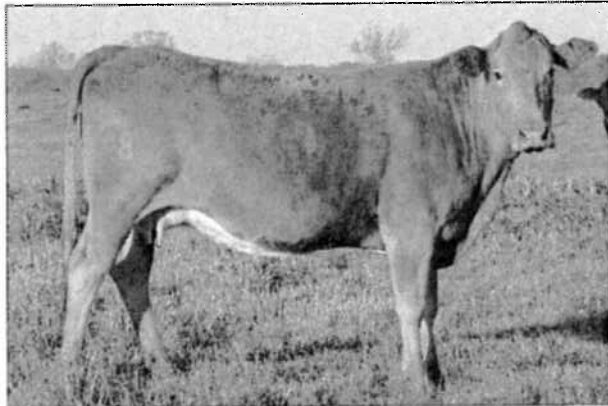
Individual ribs including foreribs are easily identified but are not quite as sharp to the touch. Some fat can be felt along the spine and over the tailhead. Some tissue cover is present over the ribs toward the top of the back.

**BCS 4 = Borderline**

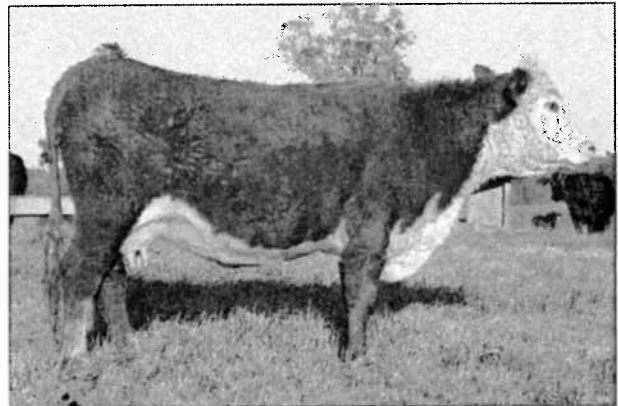
Individual ribs may not be visually obvious. Individual spinous processes can be felt when palpated but feel rounded rather than sharp. Some fat cover is present over the ribs, transverse processes, and hooks.

**BCS 5 = Moderate**

Overall appearance is generally good. Fat cover over ribs feels spongy. Palpable fat cover is present on either side of the tailhead.

**BCS 6 = High moderate**

A high degree of palpable fat exists over the ribs and around the tailhead. Firm pressure is needed to feel the spinous processes.



BCS 7 = Good

Considerable fat cover is present with a fleshy overall appearance. Fat cover over the ribs and around the tailhead is very spongy. Fat "pones" or "rounds" may be starting to form along the tailhead.



BCS 8 = Fat

The animal is very fleshy and appears overconditioned. Palpation of the spinous processes is near impossible. Large fat deposits are present over the ribs and around the tailhead. Fat pones around the tailhead are obvious.



BCS 9 = Extremely fat

The overall appearance is blocky with extremely wasty and patchy fat cover. The tailhead and hooks are buried in fatty tissue with fat pones protruding. Bone structure is no longer visible and barely palpable. Large fatty deposits may even impair animal mobility.



Figure 3. Body condition scores and descriptions for beef cattle.